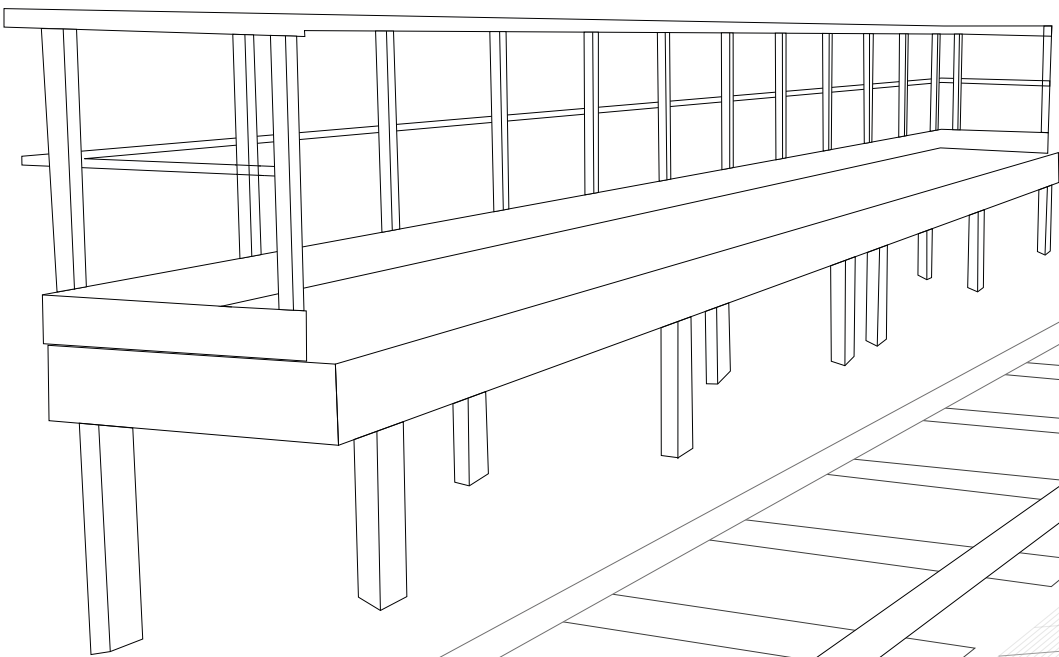


**MEISER**®



GRP

Access Systems



## What sets us apart

MEISER is one of the world's leading manufacturers of grating, profile planking and staircases. Further products such as fall protection mats and special products complete the product portfolio.



In addition, the company has also been working with Fibre-reinforced composites at its Oelsnitz site in the Vogtland region for decades.

Construction products made of fibre-reinforced composites are becoming increasingly important in structural engineering at Deutsche Bahn AG. Products made of glass fibre reinforced plastic (GRP) play a special role in this context.

MEISER develops & supplies system solutions in this sector, and we are your competent partner from tender preparation to execution.

Of course, we fulfil all requirements in connection with the manufacturer-related product qualification (HPQ) according to the standard DBS 918 010.



<b>Herstellerbezogene Produktqualifikation</b>	
<b>HPQ nach DBS 918 010</b>	
<small>Technische Lieferbedingungen für die Ausführung von Komponenten aus Glasfaserverstärktem Kunststoff (GFK).</small>	
Der Hersteller	<b>Meiser Vogtland OHG Am Lehnteich 3 08606 Oelsnitz</b>
ist qualifiziert nachfolgende Produkte / Halbzeuge aus GFK in Serienfertigung herzustellen und zu liefern:	
<input checked="" type="checkbox"/> <b>Gitterroste</b>	<b>Nr. der EBA-Zulassung:</b> 21.51-21 izbia/026-2101#023-(027/16-Zul)
	<b>Gültigkeit bis:</b> 31.01.2022
	<b>Nr. der Anwendererklärung:</b> - ohne -
<input checked="" type="checkbox"/> <b>Konstruktionsprofile</b>	<b>Nr. der EBA-Zulassung:</b> 21.51-21izbia27-2101#004-(032/16-Zul)
	<b>Gültigkeit bis:</b> 30.04.2023
	<b>Nr. der Anwendererklärung:</b> - ohne -
<b>Verwendetes Herstellerzeichen:</b> (ohne)	
Diese Bescheinigung bestätigt, dass die Anforderungen der DBS 918 010 für o.g. Komponenten aus Glasfaserverstärktem Kunststoff im Rahmen des Herstellerbezogene Produktqualifikation (Dokumenten- und Betriebsprüfung) geprüft und die erforderlichen Nachweise erbracht wurden.	
<b>Einschränkungen:</b>	a) Der Einsatz der Komponenten ist auf den in dem jeweiligen Verwendbarkeitsnachweis (EBA-Zulassung) bzw. den in der zugehörigen Anwendererklärung (TM) genannten Anwendungsbereich beschränkt.
	b) Die Produkte sind bei den während der Betriebsprüfung begutachteten Zulieferern zu beziehen (s. Seite 2 dieser Urkunde)
	keine weiteren Eintragungen
<b>Gültigkeit:</b>	Wiederholungsqualifikation befristet bis 31.07.2021
<b>Beginn:</b>	01.08.2018
<b>Gültigkeitsdauer:</b> <small>s.o. Einschränkung!</small>	Diese Bescheinigung gilt nur auf der Grundlage eines gültigen Verwendbarkeitsnachweises des Eisenbahnbundesamtes (EBA) und so lange wie sich die Bestimmungen der oben genannten DBS, die Herstellungsbedingungen im Werk und / oder die werkseigene Produktionskontrolle nicht wesentlich verändert haben (s. Seite 2 Allgemeine Bestimmungen).
<small>Allgemeine Bestimmungen zur Beachtung: s. Rückseite dieser Urkunde</small>	
<b>Deutsche Bahn AG</b> Beschaffung Infrastruktur Qualitätssicherung GS.021	
Berlin, 01.08.2018	I.V.  T. Müller
	I.V.  K.-P. Dittmar

## Designed and tested for you

- Tested quality by our partners:  
IMA GmbH Dresden, SKZ Würzburg, MPA NRW, Säurefließner Großburgwedel
- Electrically insulating - no earthing required
- Long service life
- Low maintenance costs  
High & durable anti-slip properties for floor coverings
- Individual colouring possible
- Simple assembly & adaptation to difficult local circumstances
- Relatively low risk of theft



## GRP-floorings

### Performance features

- All GRP products with approval by the German Federal Railway Authority (EBA) and including manufacturer's product qualification HPQ according to DBS 918010
- Tested slip resistance for a variety of surfaces and mesh combinations according to BGR 181 classification R10 - R13
- Tested fire behaviour according to EN 13501-1 - Classification Bfl-s1 (hardly flammable, self extinguishing properties, no flaming droplets)

### Your advantages

- Wide range of open and closed floor coverings as well as fasteners in various material grades available from stock
- Various railway fittings for the common rail types (S49, S54, UIC 60) available
- Detailed advice and production of special fasteners by our experienced employees

Picture below:  
German Museum of Technology, Berlin



Bridge roofings



Bridge over the Main, Haßloch

Washing bays



Keolis washing bay, Hamm

Service routes / track crossings



Service route main station, Zwickau/Saxony



Service route, Ludwigshafen

Platforms / Guide systems for visually impaired persons



Train station, Morsum(Sylt)

## GRP-constructions

### Performance features

- Delivery of the GRP-constructions as pre-assembled units
- On-site installation as a complete service or alternatively guided installation possible
- Thanks to simple foundation forms, GRP constructions can be installed cost-effectively, especially in the often cramped railway environment.

### Your advantages

- Planning, statics and production from a single source in compliance with railway-specific standards & guidelines
- Germany-wide sales force with measurement option

Picture below:  
Changeover assistance station, Kochel



Stairways

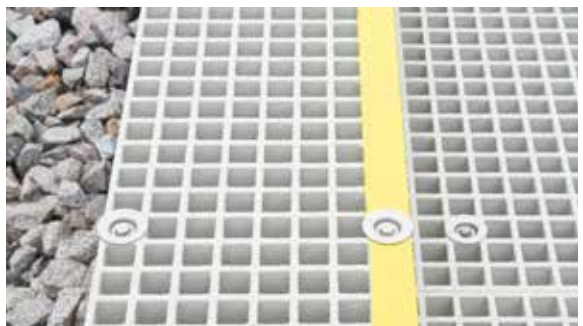


Embankment stairs, Friedberg

Walkways & Platforms



Changeover assistance station, Kochel



Interior cleaning station, Erfurt

## GRP-Guardrail

### Performance features

- Electrically insulating properties
- Comparatively low dead weight
- Segmental construction
- Standard colour grey or yellow
- Material can be dyed according to customer-specific requirements
- Individual building connections through standard & special components

### Your advantages

- Wide range of railing types available according to static and structural requirements
- Planning & production from a single source
- Germany-wide sales force with measurement option

Picture below:  
Maintenance hall ÖBB, Innsbruck

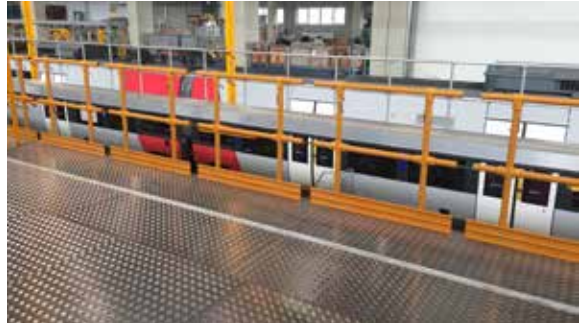




### Workshops (plug-in railing)



DB maintenance hangar, Hamburg-Eidelstedt



Maintenance hall ÖBB, Innsbruck

### Railway station (crossbar guardrail)



Railway station, Sülldorf

## Surfaces & Fastenings

According to the current Deutsche Bahn standard DBS 918 010, GRP floor systems must have special mesh sizes and slip resistance for the different areas of application.

### Extracts from DBS 9180 10:

Application	max. clear mesh size [mm]
operating platforms, gangways, service routes	33 x 33
Service routes on bridges over traffic routes	20 x 20
Washing bays	43,8 x 43,8
Emergency and escape routes	8 x 8 or closed
Public ways	8 x 8 or closed
Inspection corridors, floor coverings over workplaces	13 x 13 or closed

In railway-specific applications, the slip resistance must at least comply with evaluation group R12 to DIN 51130 and must be verified by an independent institute.

#### Notice:

GRP grating have very good anti-slip properties - due to the „concave“ surface (R12) of the top sides or „gritted“ surface (R13). Grating that are subjected to water should have a concave surface. If (additionally) fuels and lubricants are applied, gritted grating must be used.

MEISER stocks an extensive range that meets the above criteria.

The standard-compliant fastenings for GRP flooring systems such as saddle clips or head bolt fastener are also available from stock in a variety of designs and material grades.



Mesh size 33x33 mm – concave surface (K) or corundum-gritted surface (KB) – slip resistant R13



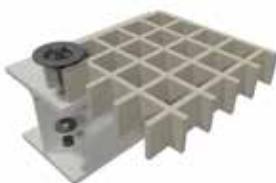
Mesh size 13x13 mm – concave surface (K) or corundum-gritted surface (KB) – slip resistant R13



Mesh size 8x8 mm – quartz-gritted surface (QB) – slip resistant R13



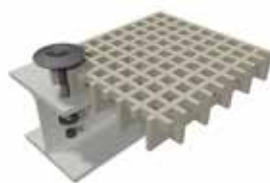
Closed corundum-gritted surface (KB) – slip resistant R13



Saddle clip disc upper part



Saddle clip M-type upper part



Saddle clip raised disc upper part



Head bolt fastener

## Contact persons

In order to be really close to your wishes and needs, MEISER relies on an old but proven sales strategy: personal support.

Rely on short ways and rely on reliable contacts who will advise you with experience and expertise, show you solutions and also stand by your side immediately if things do not go smoothly. We believe this is the only way to ensure that your needs are met.

We will not leave this path, because it is the path of quality and reliability that begins with the products and does not end with customer care.

Our team will be happy to assist you.

Alexander Meixner

Address: MEISER Vogtland OHG  
Am Lehmteich 3  
D-08606 Oelsnitz

Phone: +49 (0) 37421 / 50 2241

Fax: +49 (0) 37421 / 50 5241

e-Mail: [a.meixner@meiser.de](mailto:a.meixner@meiser.de)

Torsten Blaha

Dipl. Ing.

Address: MEISER Vogtland OHG  
Otto-Hahn-Ring 11  
D-64653 Lorsch

Phone: +49 (0) 6251 / 854 72310

Fax: +49 (0) 6251 / 854 72329

e-Mail: [t.blaha@meiser.de](mailto:t.blaha@meiser.de)



## **Imprint**

Design, concept, technical illustration and  
lithography: MEISER

Photography: MEISER

Technical development reserved.

We exclude any liability for any errors or mistakes.