

Post (square tube), Handrail, Kneerail (roundtube), Kickplate

Post (square tube)

Dimension (H x B x D) (mm)	Description acc. EN 13706	~ Weight / M
50 x 5,0 mm	QR 50x50/5 EN13706-BGV-IFU E23	1,62 kg
60 x 4,5 mm	QR 60x60/4,5 EN13706-BGV-IFU E23	1,88 kg

Handrail

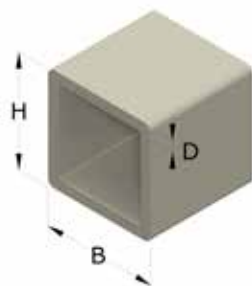
Dimension (B1 x B2 x H x D) (mm)	Description acc. EN 13706	~ Weight / M
70 x 50 x 54 x 4 mm	O 70x50/4 EN 13706-ZGV-IFU E23	1,14 kg
80 x 60 x 54 x 4 mm	O 80x60/4 EN 13706-ZGV-IFU E23	1,19 kg

Kneerail (roundtube)

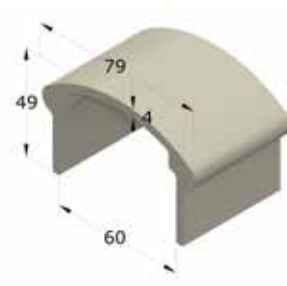
Dimension (ØA X D) (mm)	Description acc. EN 13706	~ Weight / M
30 x 2,8 mm	R30/2,8 EN 3706.OGV-IFU E17	0,48 kg
40 x 4 mm	R40/4 EN13706-OGV-IFU E23	0,90 kg

Kickplate

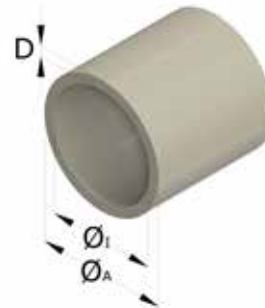
Dimension (H x B x D) (mm)	Description acc. EN 13706	~ Weight / M
153 x 15 x 3,5 mm	FI 153x15/3,5 EN13706-ZGV-IFU E17	1,24 kg



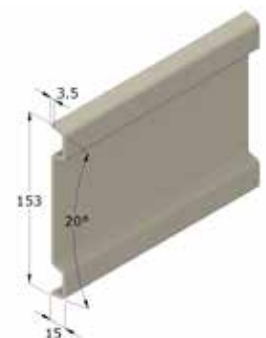
Post (square tube)



Handrail



Kneerail (roundtube)



Kickplate